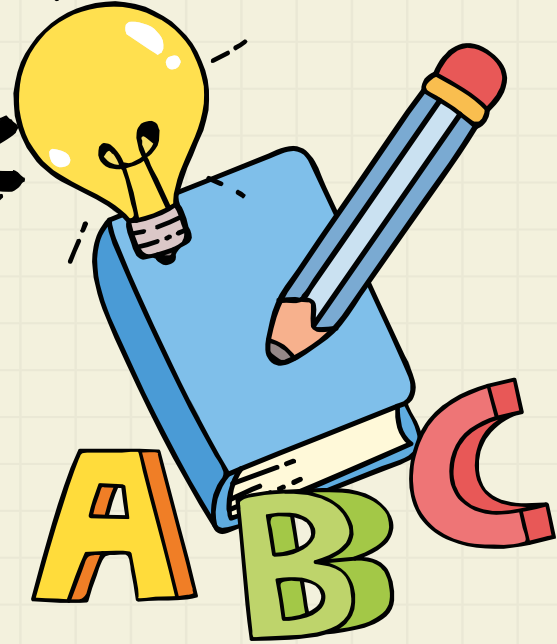


# WELCOME BACK TO SCHOOL

September 2020







# WELCOME BACK SHAUGHNESSY PARK





*It is our pleasure to welcome students, parents and staff back to school. We are very aware that there are many questions and concerns regarding our return. The current pandemic makes our work more complex, but this work remains as important as it has ever been. The risks associated with the COVID-19 virus cannot be eliminated completely but by working together to support students, and following provincial advice and guidelines, we can minimize those risks. As you read this plan, you will learn more about what to expect at school this year. We are proud of the work our staff does and we look forward to seeing our students continue to grow and succeed.*



# CHECK OUT THE FOLLOWING SLIDES TO SEE WHAT SCHOOL WILL LOOK LIKE THIS YEAR:

- ★ How are we preparing for students return?
- ★ Before you send your child to school
- ★ What is a cohort?
- ★ Arriving at school
- ★ Assigned Doors MAP
- ★ Entering the School
- ★ Bussing
- ★ Walking in the hallways
- ★  Classroom set-up & school supplies
- ★ Learning
- ★ Recess
- ★ Breakfast & Lunch Programs
- ★ Dismissal/Appointments
- ★ What happens if a child gets sick while at school?
- ★ Masks
- ★ Student Mental Health and Well-being.
- ★ Helpful Links / Resources
- ★ Contact Info 

## ★ HOW ARE WE PREPARING FOR STUDENTS:

- ★ Thorough cleaning has been done and will continue throughout every day and each evening.
- ★ We have signage throughout the school reminding everyone about physical distancing and health protocols.
- ★ We have marked outdoor waiting areas to identify safe distance when dropping off or picking up students.
- ★ We have also been supplied with masks, sanitizer,  sanitizer stations and cleaning supplies. 
- ★ We are closely following the expectations from Manitoba Health, Manitoba Education and the Winnipeg School Division.

[BACK TO  
MENU](#)

# BEFORE YOU SEND YOUR CHILD TO SCHOOL

- ★ Caregivers must prescreen their child/children to ensure they are not exhibiting any COVID-19 symptoms. Any student who is showing any symptoms (including runny nose, sneezing, coughing, etc.) must stay home. See this link for the screening tool:

<https://sharedhealthmb.ca/covid19/screening-tool/>

- ★ Pack a water bottle. Water fountains will not be operating at this time.
- ★ Masks are mandatory for students in Grades 4-6, as well as on the bus. They are strongly recommended in all other grades.

[BACK TO  
MENU](#)



## WHAT IS A COHORT?

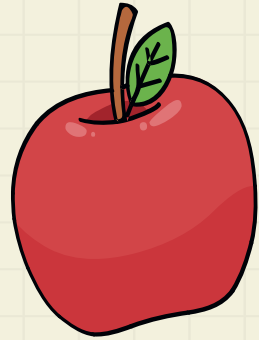
- ★ A Cohort is a group of students that will stay in the same part of the building, have recess together and if enrolled in the lunch program, will eat lunch together.
- ★ Physical distancing within the cohort includes a minimum of one-metre separation between students when seated at desks or tables.



[BACK TO](#)  
[MENU](#)

# ARRIVING AT SCHOOL:

- ★ Students are strongly encouraged to arrive no earlier than 8:45 a.m. for morning classes and 12:45 for afternoon classes.
- ★ Students will not have access to the school prior to school start time (unless accessing the breakfast program) or during lunch break (unless part of lunch program).
- ★ Walking school bus staff will drop students off in their designated zone (see details on the next slides)
- ★ Students arriving by car will be dropped off on Chudley. Parents who wish to park should do so on the south side of Manitoba Ave. and then walk their student to their designated zone.



[BACK TO](#)  
[MENU](#)



# ASSIGNED DOORS



To minimize movement throughout the school, students will have an assigned doors they use every time they enter or exit the school.

**NUR/KINDER**

Front Doors

**GRADE 1+2**

Parking Lot -  
Receiving doors.

**GRADE 3**

S.E. Chudley St.  
entrance (across  
from Rm. 1).

**GRADE 4 +  
RIGHT PRG.**

S.E. Chudley St.  
entrance  
(outside Rm. 6)

**GRADE 5+6**

S.W. Manitoba  
Ave. entrance  
(outside rm. 19).

**GRADE 7+8**

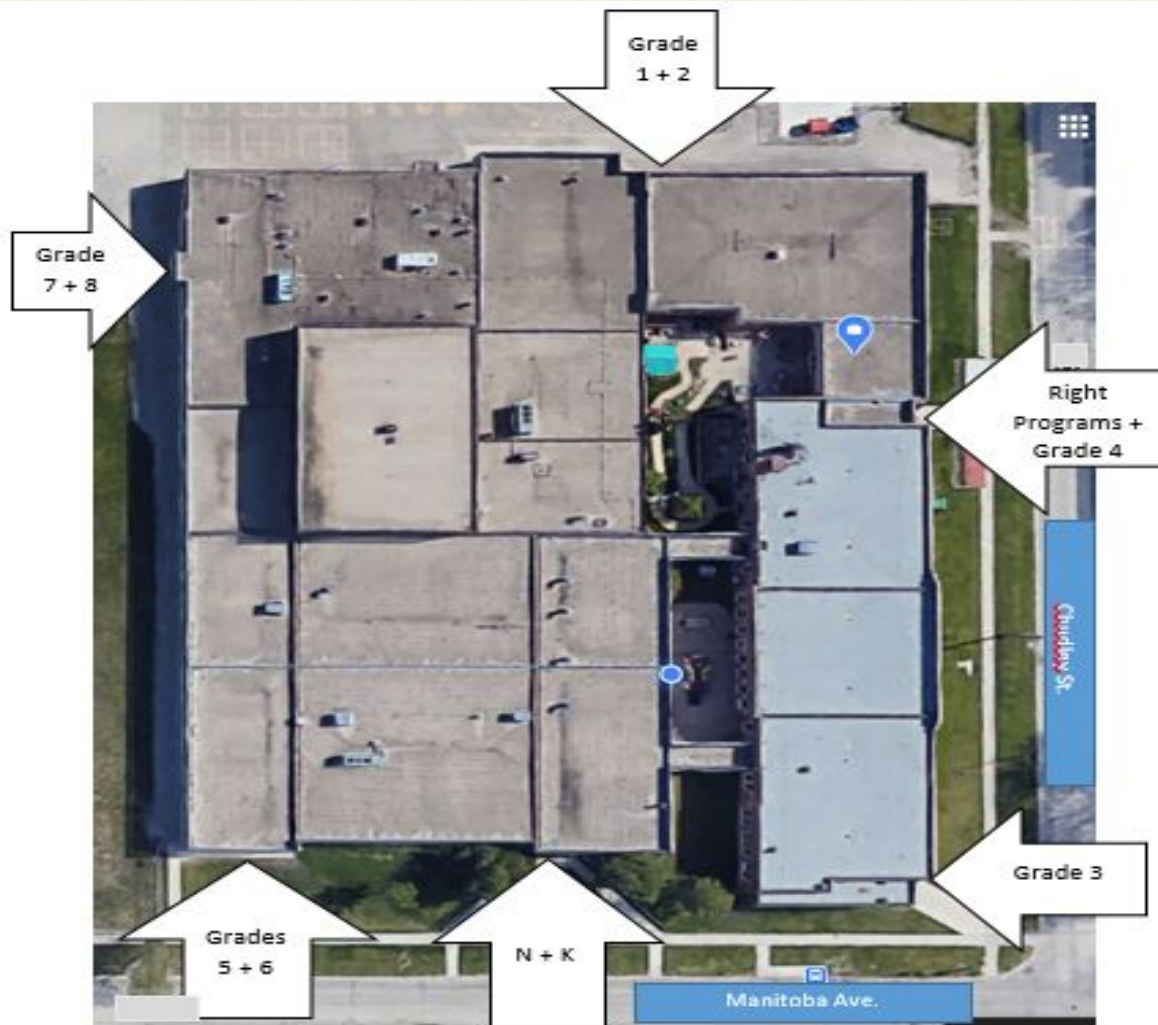
N/W entrance  
(outside Rm. 30)

[BACK TO  
MENU](#)







# ASSIGNED DOORS




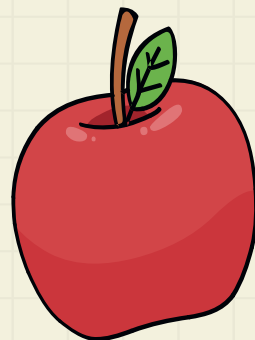
[BACK TO  
MENU](#)



# ENTERING THE SCHOOL:



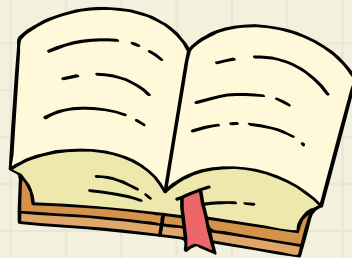
- ★ All students will meet their teachers in their designated zone (line-up 2 metres apart) and enter through their assigned door.
- ★ All students will undergo a second health screening before entering the school. It is imperative that children are healthy and symptom free. Any student who displays any symptoms will have to go home.
- ★ As much as we wish for an open school community, at this time Parents/Caregivers are not to be inside the school. If you need to visit the school please call ahead to make an appointment.
- ★  Parents of Nursery/Kindergarten students will be allowed to escort their children to their room. Parents will be required to wear a mask during drop off.




**BACK TO**  
**MENU**





# RIDING THE BUS




- ★ Children will maintain physical distancing (two metres) when lining up to get on the bus, and when exiting the bus.
- ★ Students will sit apart from each other and only one student will be allowed per seat (or two students from the same household).
- ★ Students Grade 4 and higher must wear non-medical masks.
- ★ Students will be seated in the same seats every day for regular bus routes. Students are to remain seated in their own seats.
- ★  Bus drivers will report any students showing signs of illness to transportation dispatch and the school will be contacted so that the student can be met by a staff person and immediately isolated until a parent/guardian can pick them up.

[BACK TO  
MENU](#)



# WALKING IN THE HALLWAYS



- ★ As much as possible, traffic in the hallways will be limited.
- ★ Hallways will be marked to identify 2 metre spacing. Whenever possible, students will observe physical distancing measures of 2 meters while transitioning in and out of the classroom.
- ★ Students will travel on the right side of the hallway. Arrows on the floor will identify direction of travel.
- ★ Signage for physical distancing, hand washing and direction will be highly visible throughout the school.

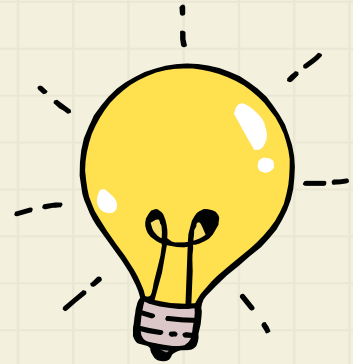


**BACK TO**  
**MENU**



# ★ CLASSROOM SET-UP

- ★ Classroom furniture has been re-organized to allow a minimum of 1 metre between student work areas
- ★ Student Supplies will no longer be shared. Each student will receive their own supplies and materials.
- ★ If materials/resources (i.e. iPads) must be shared between classes, they will be disinfected.  
Students will sanitize their hands before and after using materials that students in other cohorts use.
- ★ To minimize student interact, cohorts will be assigned specific washrooms for use.



[BACK TO](#)  
[MENU](#)

# LEARNING:

- ★ The learning focus will be on literacy and numeracy.
- ★ Regular school attendance is expected.
- ★ Support programs such as Talk To Me and LIST will continue.
- ★ Students will continue to receive Art, Music and Phys. Ed. instruction. All provincial guidelines will be followed.
- ★ Whenever possible, Phys. Ed. will take place outside.
- ★ Extra-curricular clubs and field trips are on hold. This will be reviewed at the end of September.
- ★ Teachers will continue to assess and report on student progress.
- ★ Teachers will continue to support the emotional needs of students during this difficult time.

[BACK TO](#)  
[MENU](#)



## RECESS AND OUTDOOR PLAY:

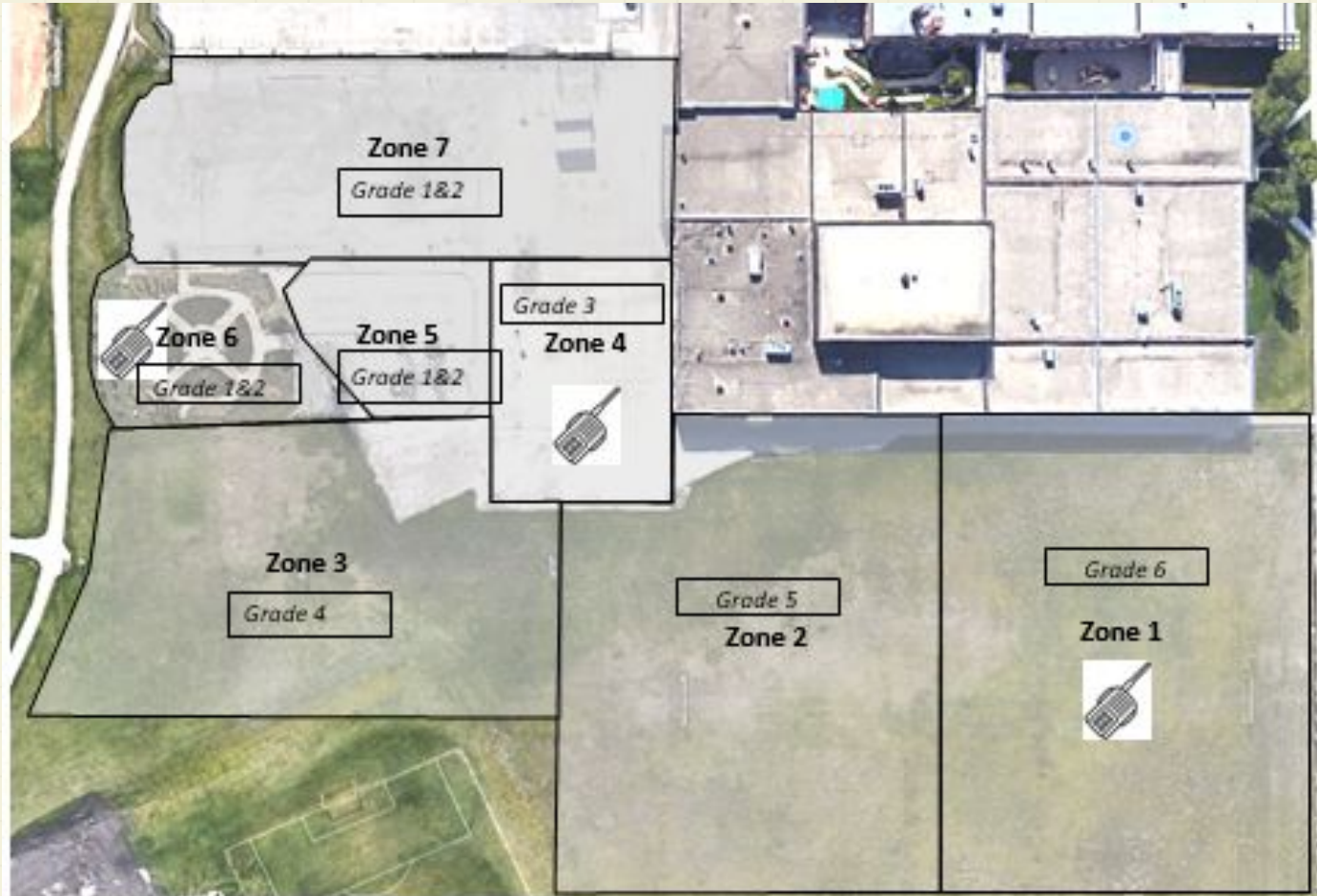


- ★ Students will continue to have 2 recess breaks per day, however, not all students will be outside at the same time. Classrooms will stagger recess and have designated play areas (see next slide).
- ★ Each room will have its own recess equipment.
- ★ All classroom teachers and EA's will supervise their cohort outside during recess.
- ★ Masks are not required while outdoors.



[BACK TO  
MENU](#)

# CLASSROOM/COHORT PLAY ZONES



[BACK TO](#)  
[MENU](#)





# EATING AT SCHOOL

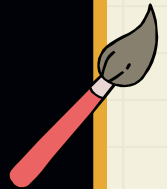
## BREAKFAST PROGRAM

- ★ Breakfast will be available from 8:20 to 8:45 a.m. in the nutrition room (rm. 1).
- ★ All food handling staff will practice meticulous hand hygiene and follow all recommended health precautions regarding food preparation and distribution.




## LUNCH PROGRAM

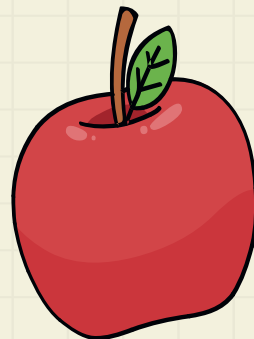
- ★ Lunch program will only be available to students whose parents are working or attending school during the day.
- ★ To the greatest extent possible, students will eat lunch with their cohort group.
- ★ Lunch program fees still apply – call the school for details.




[BACK TO  
MENU](#)

# DISMISSAL AND APPOINTMENTS

- ★ Caregivers are asked to meet students outside of their designated doors.
- ★ Students who are picking up siblings are expected to exit their assigned door and walk outside to the designated pick up area to collect the student.
- ★ N/K students and primary students will be closely monitored and handed off for pickups.
- ★ Staff will be available at the doors for assistance.
- ★  If your child is being picked up early, please call ahead so that we can have your child ready to go. Your child will be walked out to meet you through their designated door.



**BACK TO**  
**MENU**



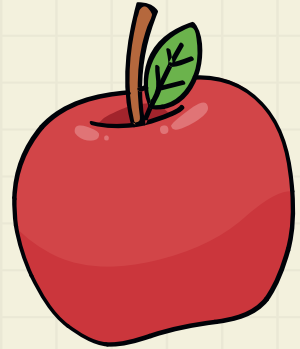
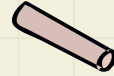
# ★ WHAT HAPPENS IF A CHILD BECOMES SICK AT SCHOOL? ★

- ★ If a student develops symptoms at school they must go home immediately for the safety of others.
- ★ If ill, the student will be removed from their classroom, given a mask, and will be isolated in a separate room while being monitored by a staff member.
- ★ You will be called to pick up your child immediately.
- ★ Once you (or designate) arrive, phone the school (204-586-8376) and a staff member will walk your child out to meet you.
- ★ If a COVID-19 case is known we will follow directive from Manitoba Public Health Authorities.



[BACK TO](#)  
[MENU](#)

# MASKS:



- ★ Non-medical mask are required for students and staff from grades 4-8, when *physical distancing cannot be met*.
- ★ Parents and caregivers will choose whether younger students (gr. 3 and under) should wear a mask.
- ★ The proper use and disposal of non-medical masks are an added layer of protection but does not replace other health precautions.
- ★ Parent/guardians will be expected to provide their child with a personal face mask. If a student does not have one, a mask will be provided.
- ★ Staff will review proper handling and disposal of masks with students.

[BACK TO](#)  
[MENU](#)

# STUDENT WELL-BEING



This has been a challenging time for everyone, including our children. Making sure that our students feel safe, calm and ready to learn is a priority.

- ★ All our support staff are ready to support teachers, students and parents in our to return to school.
- ★ Staff will focus on supporting students who are experiencing all of the emotions and uncertainty this pandemic has created.
- ★ Staff will continue supporting students through Mindfulness, and Self-Regulation initiatives.

[BACK TO  
MENU](#)

# ★ HELPFUL LINKS ★

Link to WSD Pandemic Planning:



<https://www.winnipegssd.ca/Parents/PandemicPlanning/Pages/default.aspx>

Link to WSD Pandemic Planning Framework:

<https://www.winnipegssd.ca/Parents/PandemicPlanning/Documents/WSD%20Framework%20for%20School%20Planning%20during%20pandemic%20WEB.pdf>

Homeschooling Information:

<https://www.edu.gov.mb.ca/k12/schools/ind/homeschool/index.html>

Return to School Information for Parents/Guardians

[https://manitoba.ca/asset\\_library/en/covid/k-12-reopeningplan-guideforparents.pdf](https://manitoba.ca/asset_library/en/covid/k-12-reopeningplan-guideforparents.pdf)

Parent/Guardian FAQs

[https://www.winnipegssd.ca/Parents/PandemicPlanning/Documents/parent\\_guardian\\_faq.pdf](https://www.winnipegssd.ca/Parents/PandemicPlanning/Documents/parent_guardian_faq.pdf)

Restoring Safe Schools

[https://manitoba.ca/asset\\_library/en/covid/k-12-reopeningplan-guidance.pdf](https://manitoba.ca/asset_library/en/covid/k-12-reopeningplan-guidance.pdf)

**BACK TO**  
**MENU**

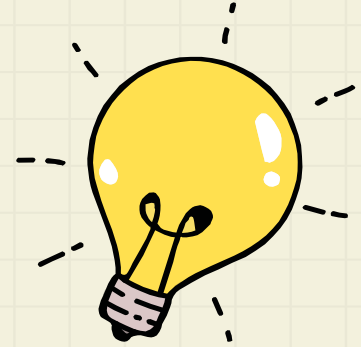
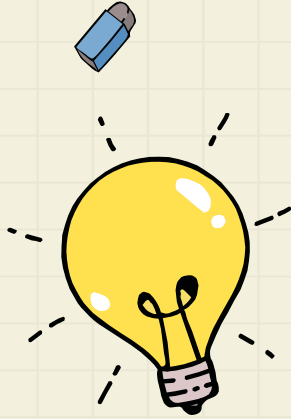
# THANK YOU

Do you have any questions?

Please contact the school at  
204-586-8376

Or

[shaughnessypk@wsd1.org](mailto:shaughnessypk@wsd1.org)



[BACK TO  
MENU](#)